

Model 5971-002 Limits and Alarms Display™

Version 1.4

Features

Real-time alarm processing

Tracks 32 frequency-band alarms

Monitors out-of-band alarms

Displays status of all alarm and warning states on all channels

Adjustable alarm threshold levels to prevent false alarms

Channel alarm summary

Pop-up Spectral Display

Holds peak value

Configurable processing parameters

Alarm latching provides reliable mechanism for very short duration alarm conditions

Alarm bands can be defined as up to 2nd order function of shaft speed

(Piranha RM only)

Center frequency definition as function of shaft speed
(Piranha RM only)

Ordering Information

Model 5971-002



www.dspcon.com

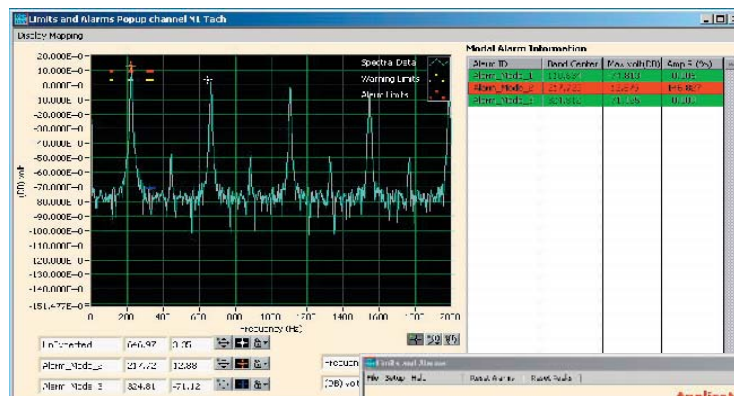
Time and Frequency Domain Exceedance (Safety) Monitoring

The Limits and Alarms Display is an HMI application for graphic and numeric viewing of statistics calculated by DSPCon's real-time processing software. Limits and Alarms processing performs both time and frequency domain peak detection.

The application presents alarm information in several graphical forms so that you can digest information quickly and react to alarm conditions in a timely manner. Displays include channel status indicators, bar-graph level indicators, and overlays and peak tracking cursors on spectral displays.

The Time Domain Processing feature monitors the time series data for peaks. One time domain feature can be defined on each channel.

For each channel, the Frequency Processing feature monitors up to 32 pre-set frequency domain features and one unexpected frequency domain feature simultaneously.



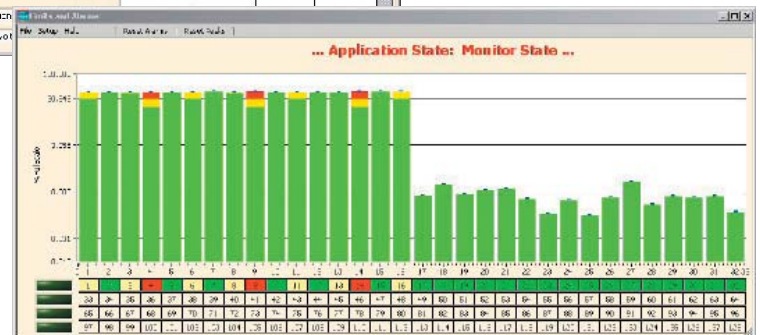
Pop-up Spectral Display

- Indicates frequency band warning and alarm thresholds on the plot
- Tracks the two largest defined alarm band responses
- Tracks the largest unexpected alarm band response



Channel Alarm Summary

- Displays time alarm, current and latched states, values, limits
- Displays frequency in band and out-of-band states, values, limits
- Shows numerical values; calculates percentage of alarm level



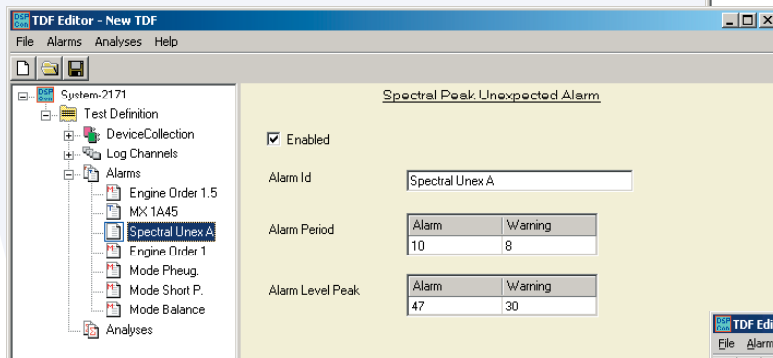
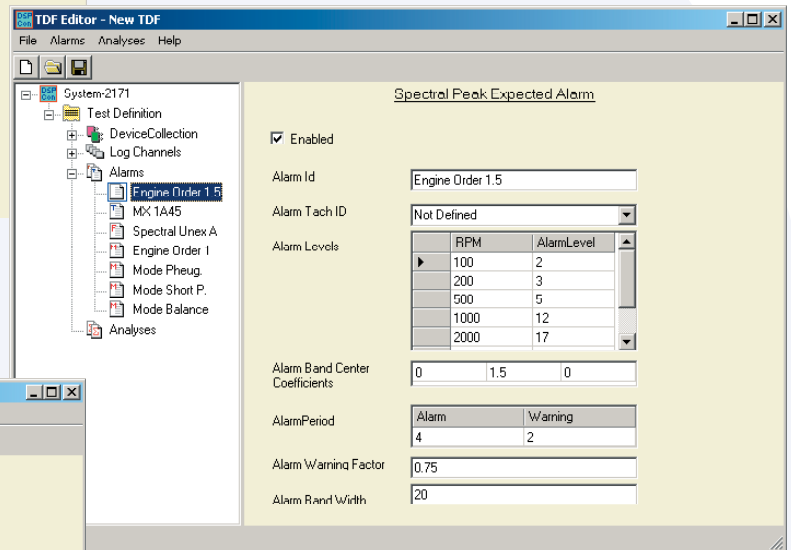
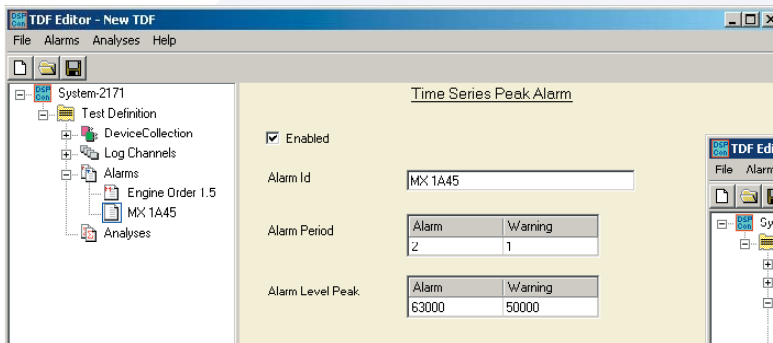
Bar Graphs and Alarm Status Board

- Shows time and frequency domain alarm results
- Reports composite and individual alarm states
- Color-codes and latches alarms and warning indicators
- Differentiates between active and latched alarms
- Shows peak hold value for each channel
- Shows peak values in Engineering Units or as function of raw counts

Simple, Versatile Configuration

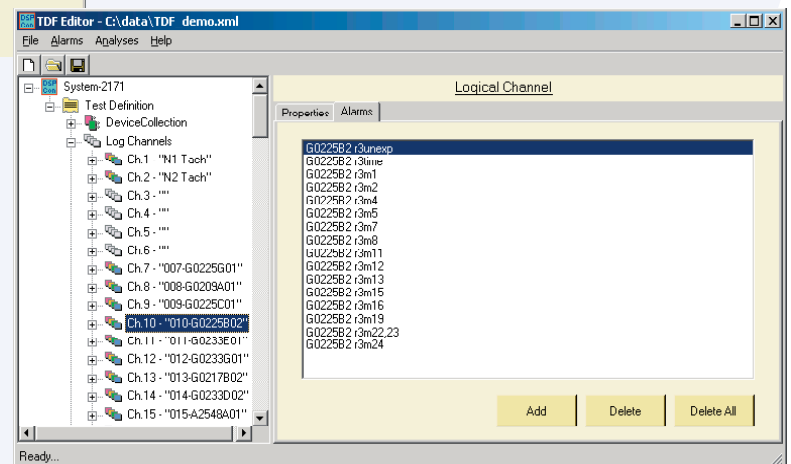
You can define alarms using your DSPCon Piranha III, DataFlex-500 or DataFlex-1000 TDF Editor™. Each type of alarm—Time Series Peak, Spectral Peak Expected, or Spectral Peak Unexpected—has a wide range of adjustable properties, including:

- ID
- Warning and Alarm Level thresholds
- Alarm periods, and more



Association of alarms with channels is quick, easy, and flexible. You can set:

- The same alarm on multiple channels,
- Different alarms on each channel, or
- A combination of the two.



Acquiring, Processing and Managing the World's Data.

DSPCon, Incorporated · 380 Foothill Road · Bridgewater, New Jersey 08807
Phone: (908)722-5656 Fax: (908)722-3259 Email: info@dspcon.com Internet: www.dspcon.com